

*Monthly  
Report  
April  
2026*



**PATH**

Partnership for Accessible Transportation Help

# PATH *Numbers*

April Metrics	#
Number of request calls for transportation information/rides	76
Number of referrals to other transportation providers	47
Number of people who received travel training	21
Number of other people who attended workshops and presentations	75
Number of advertisements of services *including brochures, handouts, social media posts	380



**“This presentation was very informative. I wasn’t aware that there are so many transit options available for free in the Charlottesville area.”**

*A senior North Garden community member*

# *PATH Activities in April*

- PATH and Jaunt partnered to bring hands-on travel training to students at Fluvanna County High School, helping young people in the school's special education program build real-world skills for independent transportation. Through interactive lessons, students learned how to set up accounts, call to schedule rides, and practice using Jaunt services firsthand.
- We held a presentation for the North Garden/Covesville area senior community to promote PATH's activities, connect with community members, and promote public transit.
- We participated in the Charlottesville Redevelopment and Housing Authority Opportunity Fair dedicated to job seekers, as well as a local Spanish-speaking community open-doors event organized by Sin Barreras.
- Participated in the meeting of the Charlottesville Regional Autism Action Group) - A task force focused on adults with autism who are capable of independent living with some support. Representatives from Charlottesville Parks and Rec, the YMCA, VIA Centers for Neurodivergence, and other providers participated in the event.
- Launched a new season of travel training for seniors, organized in collaboration with The Center at Belvedere and Charlottesville Area Transit.
- PATH staff continued answering calls through PATH Helpline and assisted older adults and people with disabilities with finding transportation services.
- We continued advanced planning for a new volunteer driver program, including discussions with potential partners, development of project materials, scheduling, and database software planning.
- PATH staff participated in Louisa, Nelson, and Fluvanna County Inter-Agency Council meetings, as well as Move2Health Equity meeting.

# Marketing

- PATH continued a digital marketing outreach campaign, distributing promotional materials to multiple local organizations and institutions.
- PATH continued marketing campaign in CAT buses.
- PATH continued the marketing campaign of the Transportation Assistance Fund.
- PATH assisted Cville Village with marketing efforts.
- We issued another edition of PATH's newsletter.

## Volunteer Driver Program Support

PATH continues support of local volunteer driver programs (Cville Village, Here to Stay in Wintergreen).

PATH offers organizational and substantive assistance for volunteer programs. We provided:

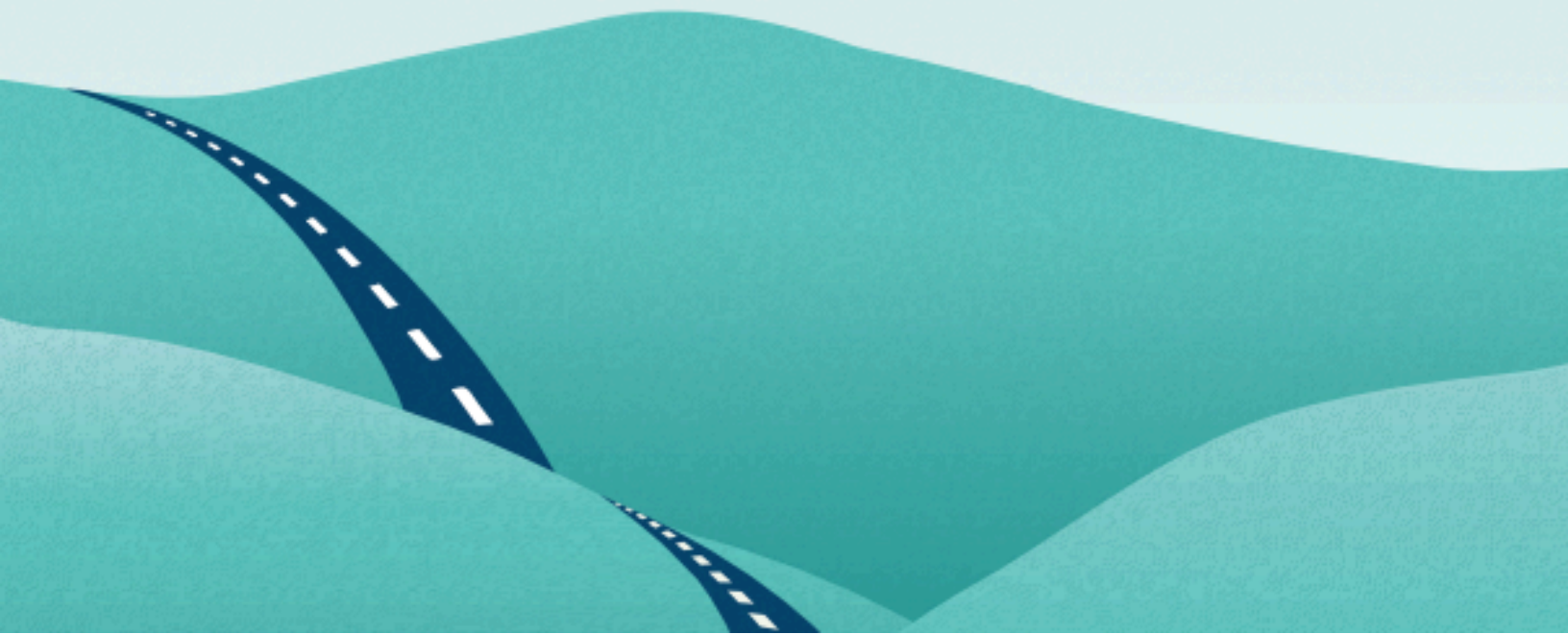
- answering calls, software management and scheduling rides for Cville Village members
- know-how and program development guidance
- staff and marketing assistance
- office support

## Transportation Assistance Fund

PATH continues to support individuals with critical transportation needs through the Transportation Assistance Fund, currently funded by the "Twice is Nice" grant. The fund provides financial assistance for non-emergency medical transportation, helping eligible residents access essential healthcare appointments when no other transportation options are available. **In April, TAF provided 2 rides.**



# FIND YOUR RIDE



## **PATH**

Partnership for Accessible Transportation Help

PATH is a free informational hub for all transportation options in the City of Charlottesville and Albemarle, Nelson, Greene, Louisa, and Fluvanna counties. By centralizing assistance through an accessible and user-friendly platform, PATH aims to ensure that every individual can navigate their journey with confidence and ease.

**888-879-7379 • [www.pathva.org](http://www.pathva.org)**