

*Monthly  
Report  
May  
2026*



**PATH**

Partnership for Accessible Transportation Help

# PATH *Numbers*

May Metrics	#
Number of request calls for transportation information/rides	110
Number of referrals to other transportation providers	74
Number of people who received travel training	27
Number of other people who attended workshops and presentations	77
Number of advertisements of services *including brochures, handouts, social media posts	350



**“Transportation workshops have a great impact on our community and are a great source of knowledge for our members.”**

*The Center at Belvedere  
Staff Member*

# *PATH Activities in May*

- PATH held 2 transportation training sessions for adult students at Piedmont Virginia Community College, helping minority and immigrant community members learn about local transportation.
- In collaboration with Charlottesville Area Transit, PATH provided travel training sessions for older adults at The Center at Belvedere, helping participants build confidence in using public transportation.
- We participated in the How-To Festival at Jefferson-Madison Regional Library, where PATH staff connected with community members and shared information about available transportation resources and services in our region.
- PATH continued updating and expanding the PATH website to include more comprehensive information about transportation options available throughout the region, making it easier for residents to learn about local transit providers and mobility resources.
- We continued working on the Charlottesville Area Alliance and AARP transportation outreach project focused on improving communication, accessibility, and public understanding of transportation services for older adults.
- PATH staff continued answering calls through PATH Helpline and assisted older adults and people with disabilities with finding transportation services.
- PATH participated in the Fluvanna County Lunch and Learn session, where staff presented information about PATH services, regional transportation options, and resources available to older adults and people with disabilities.
- PATH staff also participated in Nelson, Louisa and Fluvanna Inter-Agency Council meetings, as well as the Move2Health Equity group, to strengthen community partnerships and coordinate efforts related to transportation access and mobility in the region.

# Marketing

- PATH continued a digital marketing outreach campaign, distributing promotional materials to multiple local organizations and institutions.
- PATH continued marketing campaign in CAT buses.
- PATH continued the marketing campaign of the Transportation Assistance Fund.
- PATH assisted Cville Village with marketing efforts.
- We issued another edition of PATH's newsletter.

## Volunteer Driver Program Support

PATH continues support of local volunteer driver programs (Cville Village, Here to Stay in Wintergreen).

PATH offers organizational and substantive assistance for volunteer programs. We provided:

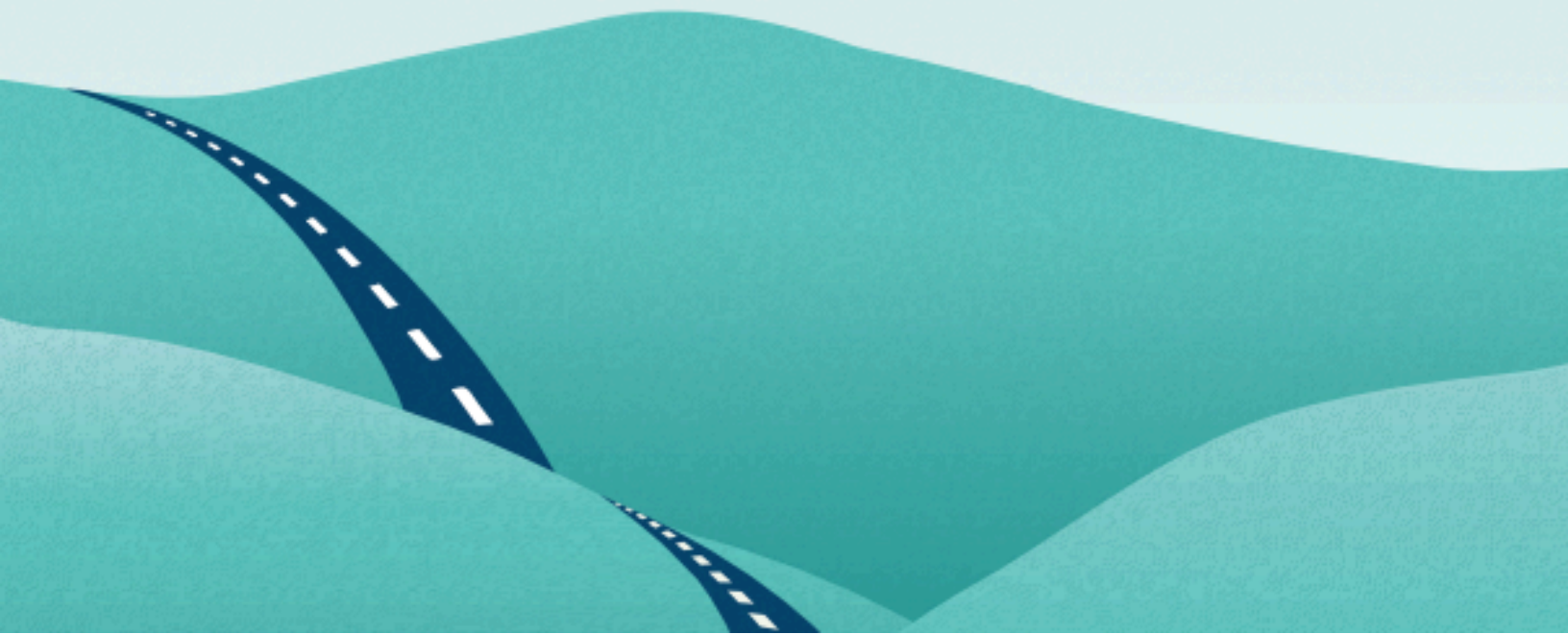
- answering calls, software management and scheduling rides for Cville Village members
- know-how and program development guidance
- staff and marketing assistance
- office support

## Transportation Assistance Fund

PATH continues to support individuals with critical transportation needs through the Transportation Assistance Fund, currently funded by the "Twice is Nice" grant. The fund provides financial assistance for non-emergency medical transportation, helping eligible residents access essential healthcare appointments when no other transportation options are available. **In May, TAF provided 3 rides.**



# FIND YOUR RIDE



**PATH**

Partnership for Accessible Transportation Help

PATH is a free informational hub for all transportation options in the City of Charlottesville and Albemarle, Nelson, Greene, Louisa, and Fluvanna counties. By centralizing assistance through an accessible and user-friendly platform, PATH aims to ensure that every individual can navigate their journey with confidence and ease.

**888-879-7379 • [www.pathva.org](http://www.pathva.org)**